

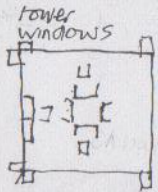
Stapleford

Abbreviations

Bk = Barnack
 Ca = Casterton
 Ch = Clunch (chalk)
 Cn = Clipsham
 Fl = Flint
 Fs = Fieldstone

St Andrews Church

Why is the tower dated as Ch when all windows look Early English 1190-1290?

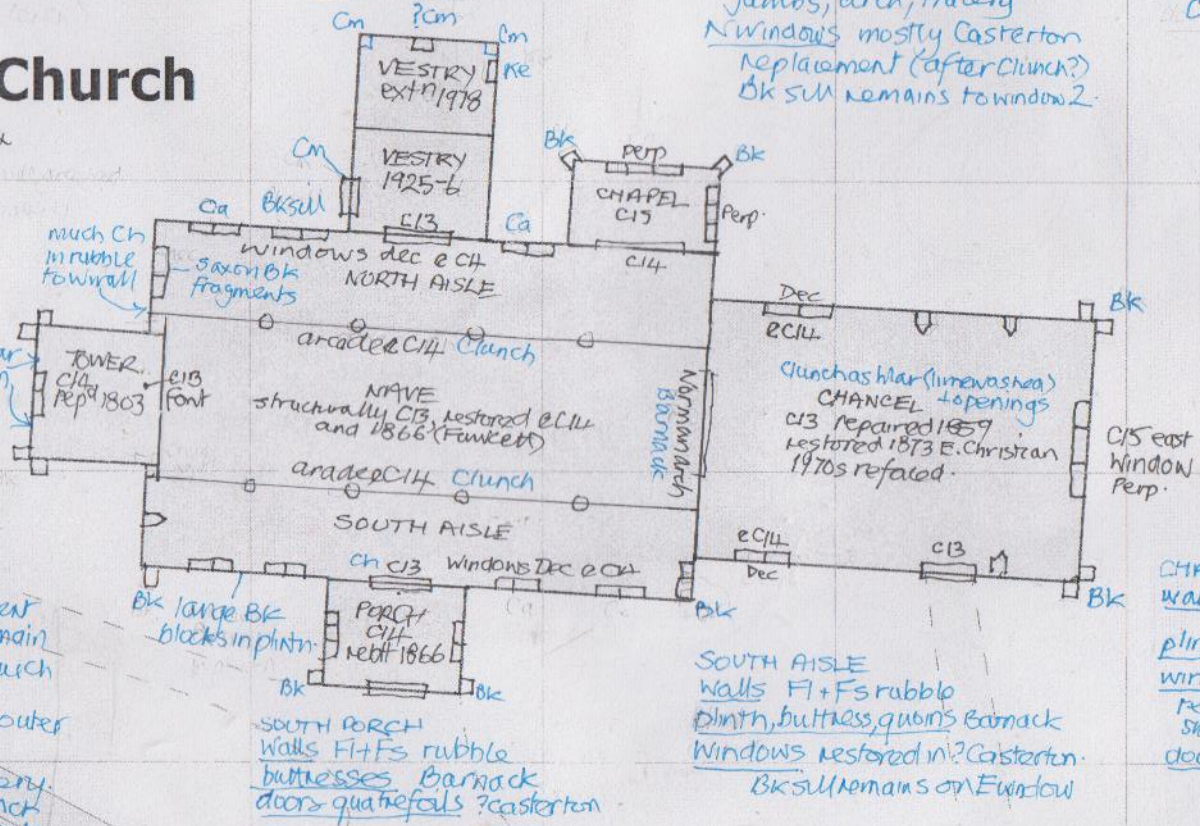


TOWER
 walls Fl+Fs+Bk+Cn rubble
 plinth, buttresses, quoins Bk*
 belfry and mid-stage windows
 Gault brick (1803) replacement of clunch? Barnack sills remain
 internal quoins grey clunch, much repaired
 west window Barnack sill, outer jambs, mullions, arch, head
 clunch inner jambs + tracery
 * buttress infill of flint or clunch
 1/2 part repaired in Gault brick

VESTRY
 walls Flint-rich rubble
 plinth Gault brick
 quoins, door Clipsham + window
 E window Ketton.

NORTH AISLE
 walls Flint-rich rubble + Ch
 plinth, quoins Barnack
 W window Barnack sill, mullions, inner jambs, tracery, outer jambs, arch, tracery
 N windows mostly Casterton replacement (after Clunch?)
 Bk sill remains to window 2.

CHAPEL
 walls Fl+Fs rubble
 plinth, buttresses Bk
 windows Bk sills + head + lower jambs on W window
 Ca replacement of west



© Crown copyright and database rights 2021 Ordnance Survey (100025252). FOR EDUCATIONAL USE ONLY.